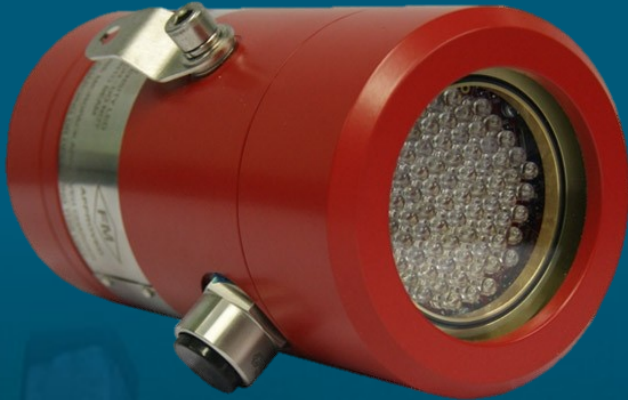


**MICROPACK**  
FIRE & GAS

# FS301

## FLAME SIMULATOR

### DATA SHEET



The FS301 is used to test the complete range of FDS301 flame detectors;

intelligent visual flame detectors and multi spectrum flame detectors; without the need for scaffolding.

The FS301 Flame Simulator produces a unique flame pattern recognized by the FDS301 product line.

The detectors in turn initiate a full alarm function test.

### Features and Benefits

#### Rugged Design

The FS301 is ATEX certified for operation in Zones 1 and 2 hazardous areas.. The simulator is supplied with a rugged transit case for safe transportation to locations worldwide.

#### Long Range Testing

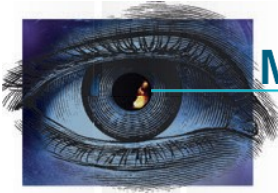
The unit is battery powered and can functionally test our detectors at distances of up to 26 feet. This greatly reduces maintenance costs by removing the need for scaffold or ladder access.

#### Ease of Maintenance

The simulator is a completely self-contained unit designed for hand held use by a single operator. A single charge of the batteries is sufficient to test in excess of one hundred detectors.

#### Meets Operator Specification

Some Operators and Certifying bodies state that a separate test source be used to ensure correct flame detector operation. The FS301 from ensures these requirements are met for the complete FDS301 product family.



## TECHNICAL SPECIFICATION

### Environmental

Operating Temp +14°F to +122°F (-10°C to +50°C)  
Storage Temp +14°F to +122°F (-10°C to +50°C)  
Humidity 0 to 100% RH non-condensing

### Operating Voltage

4.8 Vdc Nominal;  
4 x 1.2 GP180AAH batteries

### Power Consumption

35 W (Typical)

### Transit Case

Dimensions: 16L x 180H x 7W (Inches )  
Weight: 13.2 lbs (6 Kg)

### Sensitivity

Coverage: 1 degree beam divergence  
Range: 10 to 26 feet

### Enclosure

Dimensions: 4" Diameter x 8 "Length (inches)  
100 mm Dia x 200 mm  
Material: Copper free aluminum  
Entry: Fitted Ex db push button switch  
Weight: Aluminum 5.5 lbs (2.5 Kg)

### Certification

ATEX  II 2 G Ex db IIC T4

